

Agriculture Enrichment Day

Friday 10 June 2011

8:45am – 1:00pm

**Wagga Wagga Agricultural Institute (DPI)
&
School of Animal and Veterinary Sciences (CSU)**

The 2011 Agriculture Enrichment Day offers high school students in agriculture and primary industries the opportunity to observe and take part in some of the work done by professional agricultural and animal scientists.

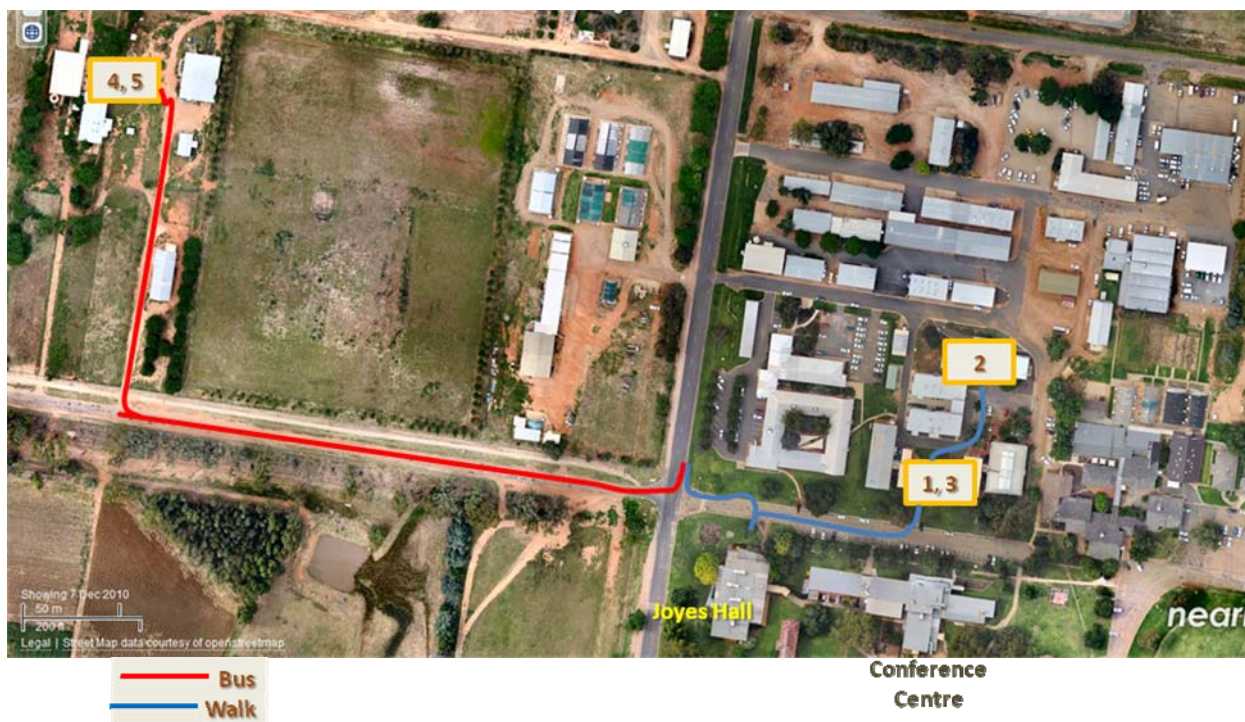
Students will have hands on experience with insects, rams and semen collection, pregnancy planning, plants and soils in five 30 minute sessions.

Sessions

Session	Presenter	Location
A Beneficial insect identification (Entomology)	Phil Bowden (DPI)	1. "C" Block Laboratory WWAJ
B The importance of Fungi	Kurt Lindbeck (DPI)	2. J Block Laboratory WWAJ
C Salinity workshop (Soil Science)	Val Draper Kathy Tenison (DPI)	3. "C" Block Laboratory WWAJ
D Field assessment of Sperm	Francoise McPherson (CSU)	4. Animal House (CSU)
E Pregnancy Planning	Brian Alston (CSU)	5. Shearing Shed (CSU)

Students must wear footwear that fully enclose the foot (shoes/boots) and that are suitable for walking. Bring clothing suitable for outdoor wear in winter.

Morning tea and Lunch will be provided in the warm CSU Conference Centre.



Map of venues and routes between sessions

At the completion of each session, a guide will accompany students to the next venue. Students will board a bus at the corner of Pine Gully Rd and Pugsley Place/Agriculture Ave to travel to venue 4 & 5 and from venue 5 to venue 1. Travel between other venues will be on foot.

Program

8:45–9:20 am – Arrival at Joyes Hall, Pugsley Place. On arrival, students will be placed into one of 5 groups, A, B, C, D or E, with at least one teacher to accompany each group. Guides from venues 1, 2, 3, 4 and 5 will take one group each to these venues for a 9:30 am start.

Time	Group A	Group B	Group C	Group D	Group E
9:30–10:00	1. Entomology "C Block Lab"	2. Plant Pathology "J Block Lab"	3. Salinity "C Block Lab"	4. Animal House CSU	5. Shearing Shed CSU
10:10–10:40	2. Plant Pathology "J Block Lab"	3. Salinity "C Block Lab"	4. Animal House CSU	5. Shearing Shed CSU	1 Entomology "C Block Lab"
10:50–11:10	3. Salinity "C Block Lab"	4. Animal House CSU	5 Shearing Shed CSU	1 Entomology "C Block Lab"	2 Plant Pathology "J Block Lab"
11:10–11:40					
11:50–12:20	4. Animal House CSU	5. Shearing Shed CSU	1. Entomology "C Block Lab"	2. Plant Pathology 'J Block Lab"	3 Salinity "C Block Lab"
12:30–1:00	5. Shearing Shed CSU	1. Entomology "C Block Lab"	2 Plant Pathology "J Block Lab"	3. Salinity "C Block Lab"	4. Animal House CSU
1:00–2:00					

There will be a break for morning tea in the CSU Convention Centre and sessions will finish at 1 pm, followed by lunch in Convention Centre and talk/question/answer on courses and careers in agriculture.

Contact:

Ms Raylene Heath
email: raylene.heath@industry.nsw.gov.au
phone: 02 6938 1978

Dr Gordon Murray
Email: gordonmur@gmail.com
Mobile: 0428 381 879